

ALL PUMPS MACHINERY COMPANY LIMITED

JINSHAN INDUSTRIAL ZONE, SHANGHAI 201507, CHINA

Website: www.allpumpscn.com

Cell: 0086-13858761656

Skype: jackcup1 or allpumpscn

Webchat: jackcup

E-mail: allpumpscn@gmail.com or cuppump@gmail.com



QBY3 系列气动隔膜泵
Series of pneumatic
diaphragm pump



Directory 目录

企业简介 BriefIntroduction	02
产品概述 Performance summary	03
应用领域 Scope of application	04
泵系统图 Pump system drawing	04
隔膜泵型号编制方法 Establishment method of pump model	05
性能曲线图 Performance graph	06
QBY3-10/15系列 QBY3-10/15 Series	07
QBY3-15A系列 QBY3-15A Series	08
QBY3-20/25系列 QBY3-20/25 Series	09
QBY3-25A QBY3-25A Series	10
QBY3-32/40系列 QBY3-32/40 Series	11
QBY3-40A系列 QBY3-40A Series	12
QBY3-50/65系列 QBY3-50/65 Series	13
QBY3-50A/65A系列 QBY3-50A/65A Series	14
QBY3-80/100系列 QBY3-80/100 Series	15
QBY3-80A/100A系列 QBY3-80A/100A Series	16
QBY3-125系列 QBY3-125 Series	17
气动隔膜泵选型规格一览表 General specification	18
爆炸视图1 exploded-views1	19
爆炸视图2 exploded-views2	20
附件一 Attachment 1	21
附件二 Attachment 2	22

Brief 企业简介 Introduction



本公司是国内一家最早设计、生产和销售隔膜泵的专业性生产商。自创业以来，产品不断完善和优化。凭借二十多年经验和专业技术，先后推出第一代气动隔膜泵（QBY）系列、第二代气动隔膜泵（QBK）系列以及第三代气动隔膜泵（QBY3）系列。产品具有进口的品质和优惠的价格，广泛运用在石化、环保、陶瓷、制药、食品、冶金、造纸、电力、印染等领域。

气动隔膜泵是一种新型输送机械，采用压缩空气为动力源，对于各种腐蚀性液体，带颗粒的液体，高粘度、易挥发、易燃、剧毒的液体，均能予以抽光吸尽。

本公司通过了ISO9001国际质量体系认证，公司全面打造的第三代气动隔膜泵(QBY3)系列，是本公司科技人员研发的先进技术核心产品，第三代气动隔膜泵(QBY3)设计合理，具有无密封、防爆、低剪切、易维修、允许空转、轻便、自吸启动、多材料选择等优点。

Our company one of the most earliest factory of designing ,producing saling diaphragm pump in China. We develop our products all the time and we created the QBY, QBK and QBY3. Our products are widely used in chemical industry, enviroment protection, oil field, pharmacy, food industry, metallurgy, paper,electricity, printing etc.

Diaphragm pump is a new transport machinery which using the compress air as the power can absorb the corrosive liquid, liquid with particles, liquid with high viscosity, volatile flammable, poisonous.

Our company has qualify the ISO9001 quanlity certification. The QBY3 series is the core product with the advantage of perfect design, no-sealing, explosion-proof, easy maintenance, allowing idle, lightweight, self-priming, multi-material selection.

产品概述 Performance summary

QBY3气动隔膜泵是我公司开发的第三代气动隔膜泵，具有使用寿命长，不会停顿等优点，它既能抽送流动的液体，又能输送一些不易流动的介质，具有自吸泵、潜水泵、屏蔽泵、泥浆泵和杂质泵等输送机械的许多优点。

- 1、不需灌引水。吸程高达5m。扬程达70m。出口压力≥6bar。
- 2、流动宽敞，通过性能好。允许通过最大颗粒直径达10mm。抽送泥浆、杂质时，对泵磨损甚微。
- 3、扬程、流量可通过气阀开度实现无级调节(气压调节在1—7 bar之间)。
- 4、该泵无旋转部件，没有轴封，隔膜将抽送的介质与泵的运动部件完全隔开，所输送的介质不会向外泄漏。所以抽送有毒、易挥发或腐蚀性介质时，不会造成环境污染和危害人身安全。
- 5、不必用电。在易燃、易爆场所使用安全可靠。
- 6、可以浸没在介质中工作。
- 7、使用方便、工作可靠。开停只需简单地打开和关闭气体阀门。即使由于意外情况而长时间无介质运行或突然停机泵也不会因此而损坏。一旦超负荷，泵会自地动停机，具有自我保护性能，当负荷恢复正常后，又能自动启动运行；
- 8、结构简单、易损件少，该泵结构简单，安装、维修方便，泵输送的介质不会接触到配气阀，联杆等运动部件，不象其他类型的泵因转子、活塞、齿轮、叶片等部件的磨损而使性能逐步下降。
- 9、可输送较粘的液体(粘度在1万厘泊以下)。
- 10、本泵无须用油润滑，即使空转，对泵也无任何影响，这是该泵最大特点。

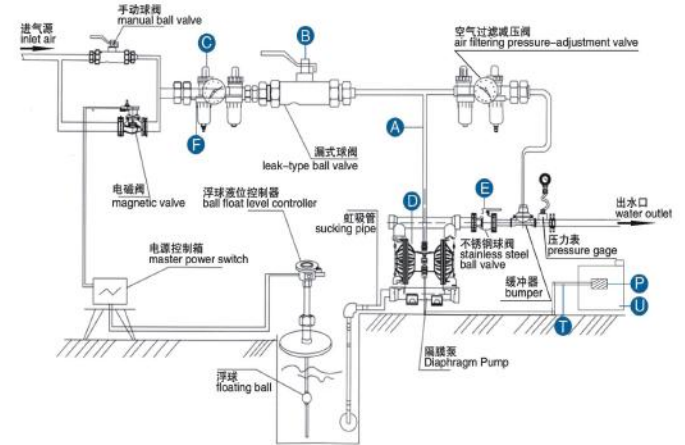
QBY3 is new developed model diaphragm pump series of AODD pump which is also the third generation, it has the virtue of long life span and nonstop operation, not only it can convey some uneasy flowed medium, with the merits of self-priming pump, diving pump, shield pump, slurry pump and impurity pump etc.

1. It's unnecessary to pour the drawing water, the suction lift reaches 3m height, the delivery lift reaches 70m length and the export pressure 6bar.
2. Wide flow and good performance. The diameter allowed to pass the max grain reaches 10mm. The damage is very less to the pump while exhausting the slurry and impurity.
3. The delivery lift and flow can pass the pneumatic valve open to realize the step less adjustment (the pneumatic pressure adjustment is between 1-7bar).
4. This pump has no rotary parts and no bearing seals. The diaphragm will completely separate the exhausted medium and pump running parts, working medium. The conveyed medium can't be leaked outside. Thus it will not cause the environmental pollution and human body safety dangerous while exhausting the toxin and flammable or corrosive medium.
5. No electricity. It's safe and reliable while using in the flammable and explore places.
6. It can be soaked in medium.
7. It's convenient to use and reliable to work. Only open or close the gas valve body while starting or stopping. Even if no medium operation or pausing suddenly for long time because of accident matters, the pump will not be damaged caused by this. Once over-loading, the pump will automatically stop and possesses the self protection function. When the load recovers normally, it also can start automatically.
8. Simple structure and less wearing parts. This pump is simple in structure, installation and maintenance. The medium conveyed by the pump will not touch the matched pneumatic valve and coupling lever etc. Not like other kinds pumps, the performance will drop down gradually because of the damages of rotor, gear and vane etc.
9. It can transmit the adhesive liquid (the viscosity is below 10000 centipoises).
10. This pump needn't the oil lubricant. Even if idling, it has no any influence to the pump. This is a characteristic of this pump.

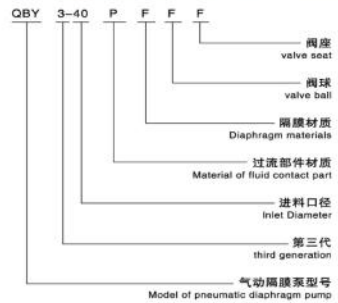
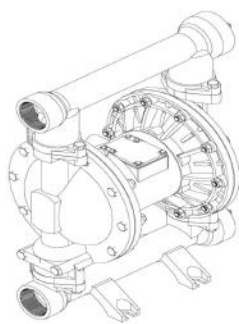
应用领域 Scope of application

- | | | |
|---------------------------|----------------|----------------------|
| 石化 petrochemical | 印染 Print | 系统冲洗 System flushing |
| 造纸 papermaking | 冶金 Metallurgy | 制药 Pharmacy |
| 食品 Food | 电力 Electricity | 陶瓷 Ceramics |
| 环保 Environment protection | | |

泵系统图 Pump system drawing



- | | |
|--|--------------------------------|
| A 供气管线 Gas Pipeline | F 气动三联件 Pneumatic FRL |
| B 铜球阀 Cuprum Ball Valve | G 消声器 Muffler |
| C 空气调压器 Air Pressure Regulator | H 排气管 Exhaust Pipe |
| D 进气管快速接头 Intake Pipe Quick Connection | I 排气用的容器 Container For Exhaust |
| E 漏式铜球阀 Leak Type Cuprum Ball Valve | |



过流部件 Fluid Contact Parts

铸钢 Cast steel	铝合金 aluminum alloy	工程塑料PP engineering plastics	不锈钢304 Stainless steel 304	不锈钢316 Stainless Steel 316	不锈钢316L Stainless Steel 316L	氟塑料 Fluoroplastic	聚四氟乙烯 Polytetrafluor Ethylene
G	L	S	P	P316	P316L	F	T

隔膜材料 Diaphragm Materials

聚胶隔膜 Gather rubber diaphragm	丁腈隔膜 Polybutadiene diaphragm	氯丁橡胶 Chloroprene rubber	三元乙丙橡胶 EPDM	特氟龙(四氟) Teflon (tetraflon)	氟橡胶 Fluororubber	聚醚隔膜 Polyether Diaphragm	聚酯隔膜 Polyester Diaphragm
J	D	L	S	F	V	M	Z

阀球 Valve Ball

丁腈橡胶 NBR	氯丁橡胶 Chloroprene rubber	聚四氟乙烯 Polytetrafluor ethylene	钢 Steel	不锈钢304 Stainless steel 304	不锈钢316 Stainless Steel 316	不锈钢316L Stainless Steel 316L	聚醚 Polyether	聚乙烯 PE
D	L	F	G	P	P316	P316L	M	E

阀座 Valve Seat

聚胶座 Polymer	丁腈橡胶 NBR	氯丁橡胶 Chloroprene rubber	聚四氟乙烯 Polytetrafluor ethylene	三元乙丙橡胶 EPDM	不锈钢304 Stainless steel 304	不锈钢316 Stainless Steel 316	不锈钢316L Stainless Steel 316L	聚醚 Polyether	聚乙烯 PE
J	D	L	F	S	P	P316	P316L	M	E

订货须知:

本公司系列气动隔膜泵进出口有侧出的,也有中间出的。订货时要予以说明,同时还要告之使用环境温度、介质、流量、扬程、压力、泵体材料、隔膜材料。

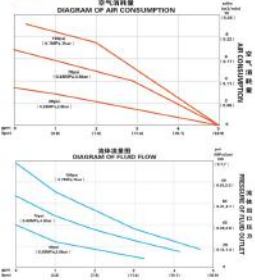
Note:

In order to select suitable material and design of diaphragm pump, process conditions like applied environment, temperature, medium, flow rate, pump head, pressure, pump body material, diaphragm material are required.

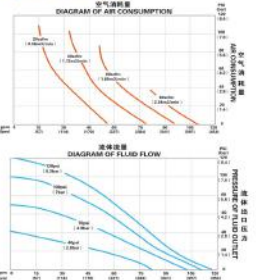
Please be kindly noted that our diaphragm pump has two constructions in inlet and outlet, one is in the side, the other is in the center of the body. Please specify it when placing orders.

性能曲线图 Performance graph

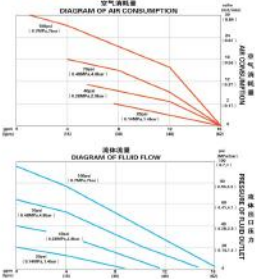
QBY3-10/15



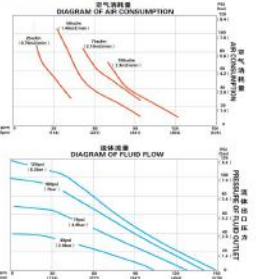
QBY3-40A/50/65



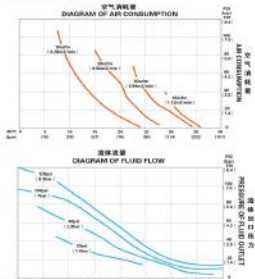
QBY3-15A/20/25



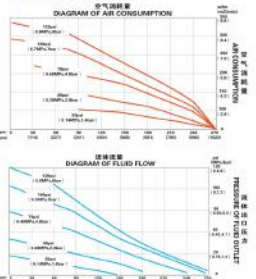
QBY3-50A/65A/80/100



QBY3-25A/32/40



QBY3-80A/100A/125



塑料 plastic QBY3-10/15



铝合金 aluminium alloy QBY3-10/15



铸铁 Cast iron QBY3-10/15



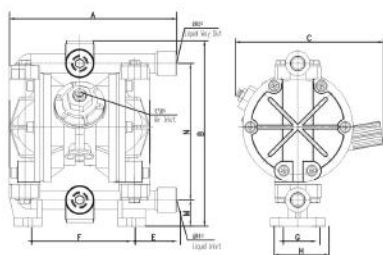
不锈钢 stainless steel QBY3-10/15



规格参数 Specifications

最大工作流量 Max Flow	5.0 gpm (18.9 lpm)
最大工作压力 Max Working Pressure	100 psi (0.7 Mpa, 7 bar)
液体进口尺寸 Fluid Inlet Size	1/2" ; 3/8"
液体出口尺寸 Fluid Outlet Size	1/2" ; 3/8"
空气进口尺寸 Air Inlet Size	1/4"
最大虹吸高度 干抽 Max Suction Height dry suction	8-10 ft. (2.5-3 m)
最大输送固体颗粒 Max Permitted Gran	0.06 in. (1.5 mm)
最大空气消耗量 Max Air Consumption	9.0 scfm
每行处理量 Every Stroke Flow	0.005 gal. (23 cc)
每往复流量 Every Reciprocating Flow	0.012 gal. (46 cc)
最大往复速度 干运转 Max Reciprocating Speed dry running	320 cpm
最大往复速度 湿运转 Max Reciprocating Speed wet running	250 cpm

安装尺寸图 Installation Sketch



材料 the material	A	B	C	M	N	E	F	G	H	Z	x	y	z	b
塑料 plastic	215	250	190	33	186	57	136	45	72	4	×	12		
铝 Aluminium	217	220	175	35	186	60	136	55	72	4	×	10		
铸铁 Cast iron	217	245	175	35	196	60	136	55	72	4	×	10		
不锈钢 Stainless steel	217	215	175	30	186	60	136	55	72	4	×	10		

塑料 plastic QBY3-15A



铝合金 aluminium alloy QBY3-15A



铸铁 Cast iron QBY3-15A



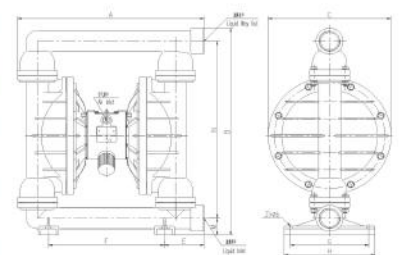
不锈钢 stainless steel QBY3-15A



规格参数 Specifications

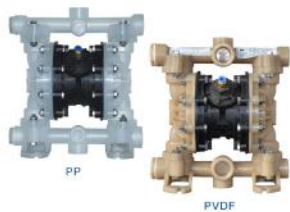
最大工作流量 Max Flow	15 gpm (57 lpm)
最大工作压力 Max Working Pressure	100 psi (0.7 Mpa, 7 bar)
液体进口尺寸 Fluid Inlet Size	1/2"
液体出口尺寸 Fluid Outlet Size	1/2"
空气进口尺寸 Air Inlet Size	1/4"
最大虹吸高度 干抽 Max Suction Height dry suction	15 ft. (4.5 m)
最大虹吸高度 湿抽 Max Suction Height wet suction	25ft. (7.6 m)
最大输送固体颗粒 Max Permitted Gran	3/32 in. (2.5mm)
最大空气消耗量 Max Air Consumption	28 scfm
每行处理量 Every Stroke Flow	0.04 gal. (0.15 L)
最大往复速度 Max Reciprocating Speed	400cpm

安装尺寸图 Installation Sketch



材料 the material	A	B	C	M	N	E	F	G	H	Z	x	y	z	b
塑料 plastic	218	270	200	23	215	42	153	100	120	4	×	8		
铝 Aluminium	218	275	195	23	215	42	153	100	120	4	×	12		
铸铁 Cast iron	218	275	195	23	215	42	153	100	120	4	×	12		
不锈钢 Stainless steel	218	275	195	23	215	42	153	100	120	4	×	12		

塑料 plastic QBY3-20/25



铝合金 aluminium alloy QBY3-20/25



铸铁 Cast iron QBY3-20/25



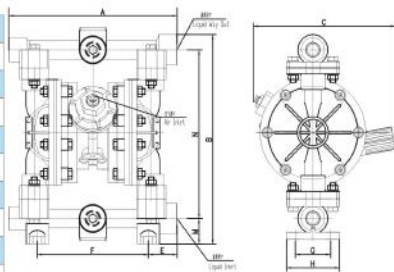
不锈钢 stainless steel QBY3-20/25



规格参数 Specifications

最大工作流量 Max.Flow	15 gpm(57 lpm)
最大工作压力 Max Working Pressure	100 psi(0.7 Mpa,7 bar)
液体进口尺寸 Fluid Inlet size	3/4" ; 1"
液体出口尺寸 Fluid outlet Size	3/4" ; 1"
空气进口尺寸 Air Inlet Size	1/4"
最大虹吸高度 干抽 Max.Suction Height dry suction	15ft (4.5 m)
最大虹吸高度 湿抽 Max.Suction Height wet suction	25ft (7.6 m)
最大输送固体颗粒 Max.Permitted Gran	3/32 in. (2.5mm)
最大空气消耗量 Max.Air Consumption	28 scfm
每往复流量 Every Reciprocating Flow	0.04 gal. (0.15 L)
最大往复速度 Max.Reciprocating Speed	400cpm

安装尺寸图 Installation Sketch



材料 The material	A	B	C	M	N	E	F	G	H	Zxφb
塑料 Plastic	257	287	260	35	220	52	153	110	152	4×8
铝合金 Aluminium	224	291	195	28	220	34	153	105	120	4×12
铸铁 Cast iron	224	291	195	28	240	34	153	105	120	4×12
不锈钢 Stainless steel	227	291	195	28	240	35	153	105	120	4×12

塑料 plastic QBY3-25A



铝合金 aluminium alloy QBY3-25A



铸铁 Cast iron QBY3-25A



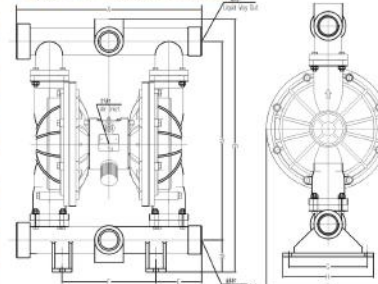
不锈钢 stainless steel QBY3-25A



规格参数 Specifications

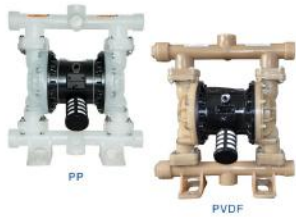
最大工作流量 Max.Flow	40 gpm(151 lpm)
最大工作压力 Max Working Pressure	120 psi(0.84 Mpa,8.4 bar)
液体进口尺寸 Fluid Inlet size	1"
液体出口尺寸 Fluid outlet Size	1"
空气进口尺寸 Air Inlet Size	1/2"
最大虹吸高度 干抽 Max.Suction Height dry suction	18 ft (5.48 m)
最大虹吸高度 湿抽 Max.Suction Height wet suction	18 ft (5.48 m)
最大输送固体颗粒 Max.Permitted Gran	1/8 in. (3.2 mm)
最大空气消耗量 Max.Air Consumption	60 scfm
每往复流量 Every Reciprocating Flow	0.15 gal. (0.15 L)
最大往复速度 Max.Reciprocating Speed	276 cpm

安装尺寸图 Installation Sketch



材料 The material	A	B	C	M	N	E	F	G	H	Zxφb
塑料 Plastic	423	485	198	65	375	97	226	137	177	4×12
铝合金 Aluminium	325	393	202	35	330	93	141	127	146	4×12
铸铁 Cast iron	325	393	202	35	330	93	141	127	146	4×12
不锈钢 Stainless steel	325	393	202	35	327	93	141	127	146	4×12

塑料plastic QBY3-32/40



PP

PVDF

铝合金aluminium alloy QBY3-32/40



铸铁Cast iron QBY3-32/40



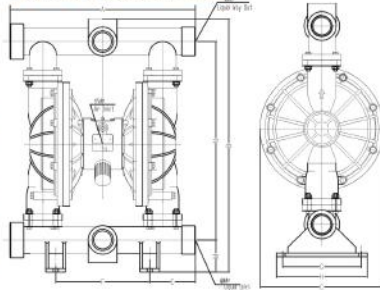
不锈钢stainless steel QBY3-32/40



规格参数 Specifications

最大工作流量 Max Flow	40 gpm(151 lpm)
最大工作压力 Max Working Pressure	120 psi(0.84 Mpa,8.4 bar)
液体进口尺寸 Fluid inlet size	1½" ; 1¼"
液体出口尺寸 Fluid outlet Size	1¼" ; 1½"
空气进口尺寸 Air Inlet Size	1.0"
最大虹吸高度 干抽 Max Suction Height dry suction	18 ft. (5.48 m)
最大虹吸高度 湿抽 Max Suction Height wet suction	18 ft. (5.48 m)
最大输送固体颗粒 Max Permitted Grain	1/8 in. (3.2 mm)
最大空气消耗量 Max Air Consumption	60 scfm
每往复流量 Every Reciprocating Flow	0.15 gal. (0.57 L)
最大往复速度 Max Reciprocating Speed	276 rpm

安装尺寸图 Installation Sketch



外形尺寸 External Dimensions		A	B	C	M	N	E	F	G	H	Zxφb
塑料Plastic		423	485	198	65	375	97	226	137	177	4 X 12
铝合金Aluminium		325	393	202	35	330	93	141	127	146	4 X 12
铸铁Cast iron		325	393	202	35	330	93	141	127	146	4 X 12
不锈钢Stainless steel		325	393	202	35	327	93	141	127	146	4 X 12

塑料plastic QBY3-40A



铸铁Cast iron QBY3-40A



铝合金aluminium alloy QBY3-40A



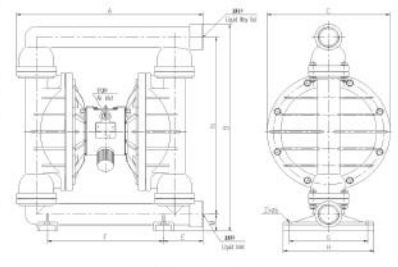
不锈钢stainless steel QBY3-40A



规格参数 Specifications

最大工作流量 Max Flow	100 gpm(378.5 lpm)
最大工作压力 Max Working Pressure	120 psi(0.84 Mpa,8.4 bar)
液体进口尺寸 Fluid inlet size	1½"
液体出口尺寸 Fluid outlet Size	1¼"
空气进口尺寸 Air Inlet Size	1.0"
最大虹吸高度 干抽 Max Suction Height dry suction	18 ft. (5.48 m)
最大虹吸高度 湿抽 Max Suction Height wet suction	18 ft. (5.48 m)
最大输送固体颗粒 Max Permitted Grain	3/16 in. (4.8 mm)
最大空气消耗量 Max Air Consumption	125 scfm
每往复流量 Every Reciprocating Flow	0.5 gal. (1.8 L)
最大往复速度 Max Reciprocating Speed	276 rpm

安装尺寸图 Installation Sketch



外形尺寸 External Dimensions		A	B	C	M	N	E	F	G	H	Zxφb
塑料Plastic		390	529	235	50	469	95	211	211	170	4 X 12
铝合金Aluminium		380	515	235	55	417	87.5	236	236	190	4 X 12
铸铁Cast iron		380	515	235	45	420	87.5	236	236	190	4 X 12
不锈钢Stainless steel		380	515	235	65	420	87.5	236	236	190	4 X 12

塑料 plastic QBY3-50/65



PP



PVDF



铝合金 aluminium alloy QBY3-50/65

铸铁 Cast iron QBY3-50/65



铸钢衬氟 fluorine lining cast steel QBY3-50/65



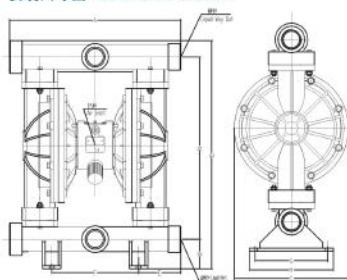
不锈钢 stainless steel QBY3-50/65



规格参数 Specifications

最大工作流量 Max Flow	100 gpm (378.5 lpm)
最大工作压力 Max Working Pressure	120 psi (0.84 Mpa, 8.4 bar)
液体进口尺寸 Fluid inlet size	2" ; 2½"
液体出口尺寸 Fluid outlet size	2" ; 2½"
空气进口尺寸 Air inlet size	1½"
最大虹吸高度 干抽 Max Suction Height dry suction	18 ft. (5.48 m)
最大虹吸高度 湿抽 Max Suction Height wet suction	18 ft. (5.48 m)
最大输送固体颗粒 Max. Permitted Grain	3/16 in. (4.8 mm)
最大空气消耗量 Max Air Consumption	125 scfm
每往复流量 Every Reciprocating Flow	0.5 gal. (1.9 L)
最大往复速度 Max Reciprocating Speed	276 cpm

安装尺寸图 Installation Sketch



材料 Material	外形尺寸 External Dimensions									
	A	B	C	M	N	E	F	G	H	Zxφb
塑料 Plastic	444	545	277	65	440	110	225	150	190	4×12
铝 Aluminum	413	550	234	52	436	85	236	135	150	4×12
铸铁 Cast iron	415	545	234	73	435	88	239	146	180	4×12
不锈钢 Stainless steel	415	545	235	80	435	90	239	146	180	4×12

塑料 plastic QBY3-50A/65A



铝合金 aluminium alloy QBY3-50A/65A



铸铁 Cast iron QBY3-50A/65A



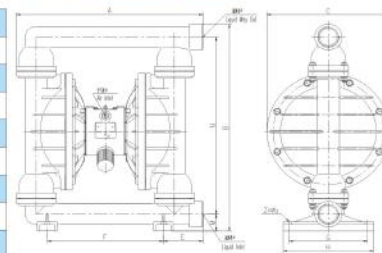
不锈钢 stainless steel QBY3-50A/65A



规格参数 Specifications

最大工作流量 Max Flow	150 gpm (568 lpm)
最大工作压力 Max Working Pressure	120 psi (0.84 Mpa, 8.4 bar)
液体进口尺寸 Fluid inlet size	2" ; 2½"
液体出口尺寸 Fluid outlet size	2" ; 2½"
空气进口尺寸 Air inlet size	1½"
最大虹吸高度 干抽 Max Suction Height dry suction	18 ft. (5.48 m)
最大虹吸高度 湿抽 Max Suction Height wet suction	18 ft. (5.48 m)
最大输送固体颗粒 Max. Permitted Grain	1/4 in. (6.4 mm)
最大空气消耗量 Max Air Consumption	175 scfm
每往复流量 Every Reciprocating Flow	1.03 gal. (3.9 L)
最大往复速度 Max Reciprocating Speed	145 cpm

安装尺寸图 Installation Sketch



材料 Material	外形尺寸 External Dimensions									
	A	B	C	M	N	E	F	G	H	Zxφb
塑料 Plastic	504	667	346	90	519	206	153	178	178	4×16
铝 Aluminum	518	620	347	55	530	110	320	220	254	4×14
铸铁 Cast iron	518	665	347	55	530	110	320	220	254	4×18
不锈钢 Stainless steel	518	665	347	55	530	110	320	220	254	4×18

塑料plastic QBY3-80/100



铝合金aluminium alloy QBY3-80/100



铸铁Cast iron QBY3-80/100



不锈钢stainless steel QBY3-80/100



塑料plastic QBY3-80A/100A



铝合金aluminium alloy QBY3-80A/100A



铸铁Cast iron QBY3-80A/100A



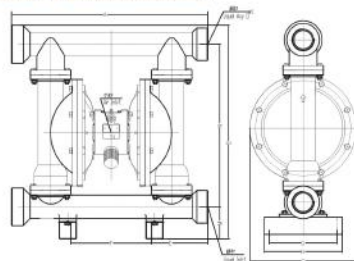
不锈钢stainless steel QBY3-80A/100A



规格参数 Specifications

最大工作流量 Max Flow	150 gpm(568 lpm)
最大工作压力 Max Working Pressure	120 psi(0.84 Mpa,8.4 bar)
流体进口尺寸 Fluid inlet size	3",4"
流体出口尺寸 Fluid outlet size	3",4"
空气进口尺寸 Air Inlet Size	1/2"
最大虹吸高度 干抽 Max.Suction Height dry suction	18 ft. (5.48 m)
最大虹吸高度 液抽 Max.Suction Height wet suction	18 ft. (5.48 m)
最大轴过固体颗粒 Max.Permitted Grain	1/4 in. (6.4 mm)
最大空气消耗量 Max.Air Consumption	175 scfm
每往复流量 Every Reciprocating Flow	1.03 gal. (3.9 L)
最大往复速度 Max.Reciprocating Speed	145 cpm

安装尺寸图 Installation Sketch

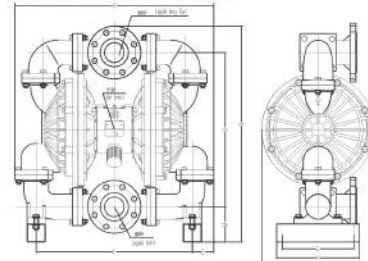


外形尺寸 External Dimensions										
材质 The material	A	B	C	M	N	E	F	G	H	ZxΦb
塑料Plastic	500	678	346	90	520	205	155	155	180	4×16
铝Aluminium	605	722	330	110	550	140	315	241	397	4×18
铸铁Cast iron	603	730	330	110	552	210	317	240	398	4×18
不锈钢Stainless steel	603	706	330	100	545	133	336	247	398	4×18

规格参数 Specifications

最大工作流量 Max Flow	275 gpm(1041 lpm)
最大工作压力 Max Working Pressure	120 psi(0.84 Mpa,8.4 bar)
流体进口尺寸 Fluid inlet size	3",4"
流体出口尺寸 Fluid outlet size	3",4"
空气进口尺寸 Air Inlet Size	3/4"
最大虹吸高度 干抽 Max.Suction Height dry suction	8 ft. (2.4 m)
最大虹吸高度 液抽 Max.Suction Height wet suction	25 ft. (7.6 m)
最大轴过固体颗粒 Max.Permitted Grain	3/8 in. (9.4 mm)
最大空气消耗量 Max.Air Consumption	325 scfm
每往复流量 Every Reciprocating Flow	2.0 gal. (7.6 L)
最大往复速度 Max.Reciprocating Speed	135 cpm

安装尺寸图 Installation Sketch



外形尺寸 External Dimensions										
材质 The material	A	B	C	M	N	E	F	G	H	ZxΦb
塑料Plastic	750	805	435	100	545	150	500	165	200	4×12
铝Aluminium	770	780	400	140	535	245	300	310	370	4×18
铸铁Cast iron	770	780	400	140	535	245	300	310	370	4×18
不锈钢Stainless steel	770	780	400	140	535	240	300	310	370	4×18

气动隔膜泵选型规格一览表 General specification

型号	入口 Suction		出口 Discharge		连接方式 Type of Connection						泵体材质 Material of pumpbody				
	Inc	dn	Inc	dn	NPT	BSPT	ANSI 法兰 Flanged	DIN 法兰 Flanged	铸铁 Castiron	铝合金 Aluminium alloy	不锈钢 Stainless steel	聚丙烯 Polypropylene	PEEK 塑料	衬氟 Fluorine lined	其他 Secondary #date
QBY3-10	3/8	10	3/8	10	√	√	○	○	√	√	√	√	√	√	√
QBY3-15	1/2	15	1/2	15	√	√	○	○	√	√	√	√	√	√	√
QBY3-15A	1/2	15	1/2	15	√	√	○	○	√	√	√	√	√	√	√
QBY3-20	3/4	20	3/4	20	√	√	○	○	√	√	√	√	√	√	√
QBY3-25	1	25	1	25	√	√	○	○	√	√	√	√	√	√	√
QBY3-25A	1	25	1	25	√	√	○	○	√	√	√	√	√	√	√
QBY3-32	1 1/2	32	1 1/2	32	√	√	○	○	√	√	√	√	√	√	√
QBY3-40	1 1/2	40	1 1/2	40	√	√	○	○	√	√	√	√	√	√	√
QBY3-40A	1 1/2	40	1 1/2	40	√	√	○	○	√	√	√	√	√	√	√
QBY3-50	2	50	2	50	√	√	○	○	√	√	√	√	√	√	√
QBY3-55	2 1/2	65	2 1/2	65	√	√	○	○	√	√	√	√	√	√	√
QBY3-50A	1	50	1	50	√	√	○	○	√	√	√	√	√	√	√
QBY3-55A	2 1/2	65	2 1/2	65	√	√	○	○	√	√	√	√	√	√	√
QBY3-80	3	80	3	80	√	√	○	○	√	√	√	√	√	√	√
QBY3-100	4	100	4	100	√	√	○	○	√	√	√	√	√	√	√
QBY3-80A	3	80	3	80	√	√	○	○	√	√	√	√	√	√	√
QBY3-100A	4	100	4	100	√	√	○	○	√	√	√	√	√	√	√
QBY3-125	5	125	5	125	√	√	○	○	√	√	√	√	√	√	√

备注 V: 出厂标配 ○: 客户选配 √: Vendor standard ○: Optional items

塑料 plastic QBY3-125



铝合金 aluminium alloy QBY3-125



铸铁 Cast iron QBY3-125



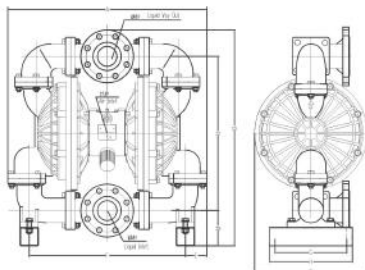
不锈钢 stainless steel QBY3-125



规格参数 Specifications

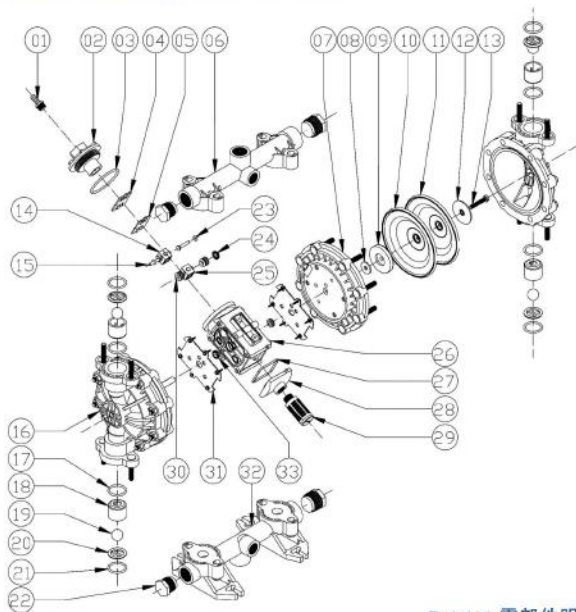
最大工作流量 Max Flow	275 gpm(1041 lpm)
最大工作压力 Max Working Pressure	120 psi(0.84 Mpa,8.4 bar)
液体进口尺寸 Fluid inlet size	5"
液体出口尺寸 Fluid outlet size	5"
空气进口尺寸 Air inlet size	3/4"
最大虹吸高度 干抽 Max Suction Height dry suction	8 ft. (2.4 m)
最大虹吸高度 湿抽 Max Suction Height wet suction	25 ft. (7.6 m)
最大输出液体增益 Max Permitted Gain	38 in. (9.4 mm)
最大空气消耗量 Max Air Consumption	325 scfh
每往复流量 Every Reciprocating Flow	2.0 gal. (7.6 L)
最大往复速度 Max Reciprocating Speed	135 rpm

安装尺寸图 Installation Sketch



外形尺寸 External Dimensions		A	B	C	M	N	E	F	G	H	Zxpb
材料 The material											
塑料 plastic		750	805	435	100	545	150	500	165	200	4 × 18
铝 Aluminium		770	780	400	140	535	245	300	310	370	4 × 18
铸铁 Cast iron		770	780	400	140	535	245	300	310	370	4 × 18
不锈钢 Stainless steel		770	780	400	140	535	240	300	310	370	4 × 18

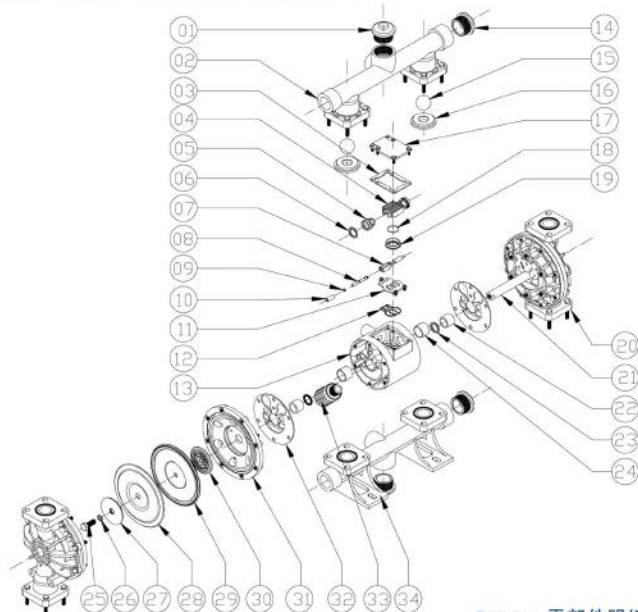
QBY3 10-25 塑料隔膜泵爆炸视图
QBY3 10-25 plastic diaphragm pump exploded-views



Parts List 零部件明细表

序号No.	名称Name	序号No.	名称Name	序号No.	名称Name	序号No.	名称Name
01	进气嘴 air inlet	02	气阀盖 cover	03	气阀盖密封圈 seal	04	引导块 guide block
05	引导块垫片 gasket	06	出料口(上盖) discharge manifold	07	隔排 clapboard	08	内夹板垫片 gasket
09	内夹板 endo plate	10	四氟膜片 rubber diaphragm	11	四氟垫片 Teflon diaphragm	12	外夹板 outside plate
13	夹板螺丝 screw	14	滑块 slide block	15	助动杆 push pole	16	立柱 stand column
17	球座O型圈 O-ring	18	球座套 ball seat jacket	19	球阀 ball valve	20	球座垫片 ball seat pressure gulus
21	球座O型圈 O-ring	22	堵头 plug	23	助动杆O型圈 O-ring	24	活塞V型圈 V-ring
25	滑块 slide block	26	气阀室 center block	27	气阀室垫片 gasket	28	气阀室座 seat
29	消声器 muffler	30	活塞 piston	31	气阀室垫片 gasket	32	进料口(下盖) suction manifold
33	连杆轴V型圈 V-ring						

QBY3 32-100 塑料隔膜泵爆炸视图
QBY3 32-100 plastic diaphragm pum pexploded-views



Parts List 零部件明细表

序号No.	名称Name	序号No.	名称Name	序号No.	名称Name	序号No.	名称Name
01	堵头 plug	02	出料口(上盖) discharge manifold	03	气阀室垫片 gasket	04	大滑块铝件 slide block
05	活塞 piston	06	V型圈 V-ring	07	小滑块 slide block	08	助动杆 push pole
09	助动杆O型圈 O-ring	10	助动杆套 push pole jacket	11	引导块 guide block	11	引导块垫片 gasket
13	气阀室 valve cage	14	堵头 plug	15	球阀 ball valve	16	球座 seat
17	气阀室盖 cover	18	大滑块O型圈 O-ring	19	大滑块塑料件 plastic slide block	20	立柱 stand column
21	连杆轴 connection rod shaft	22	连杆轴套 shaft jacket	23	V型圈 V-ring	24	活塞套 piston bush
25	夹板螺丝 screw	26	外夹板 outside plate	27	外夹板 outside plate	28	四氟膜片 Teflon diaphragm
29	四氟膜片 rubber diaphragm	30	内夹板 inner plate	31	隔排 clapboard	32	气阀室垫片 gasket
33	消声器 muffler	34	进料口(下盖) suction manifold				

附件一 Attachment 1



附件二 Attachment 1

